



**MEYLE**  
Products®

### **Rubber mount**

MEYLE No. 814 896 5253/HD  
Reference No. 89 65 253

**Exceeds OE Specifications**  
For information please check [www.meyle.com](http://www.meyle.com) or contact your sales person

## **Rubber mount** to fit **Saab 9000**

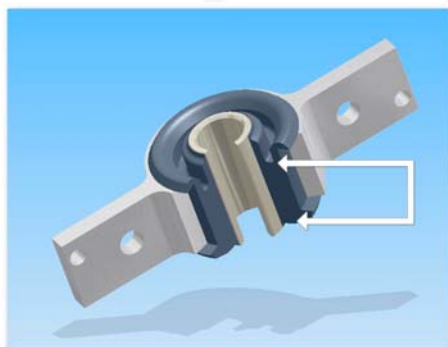
The Saab 9000 is comfortably balanced and has a good road holding ability. Even so, the rubber mount of the control arm is known for early failure. It is not so much that the mount is under pressure from the dynamic forces of the suspension. Rather its failure is caused by the high forces acting on the rubber mount when the vehicle brakes and accelerates.

By using an improved rubber quality and also filling it out with additional rubber, MEYLE's engineers have considerably increased the loading capability of the part, preventing premature failure.

as OE version



MEYLE version



The reinforced rubber mount now has a far longer service life, without compromising any comfort aspects for driver and passengers.

**MEYLE - Miles in Motion**